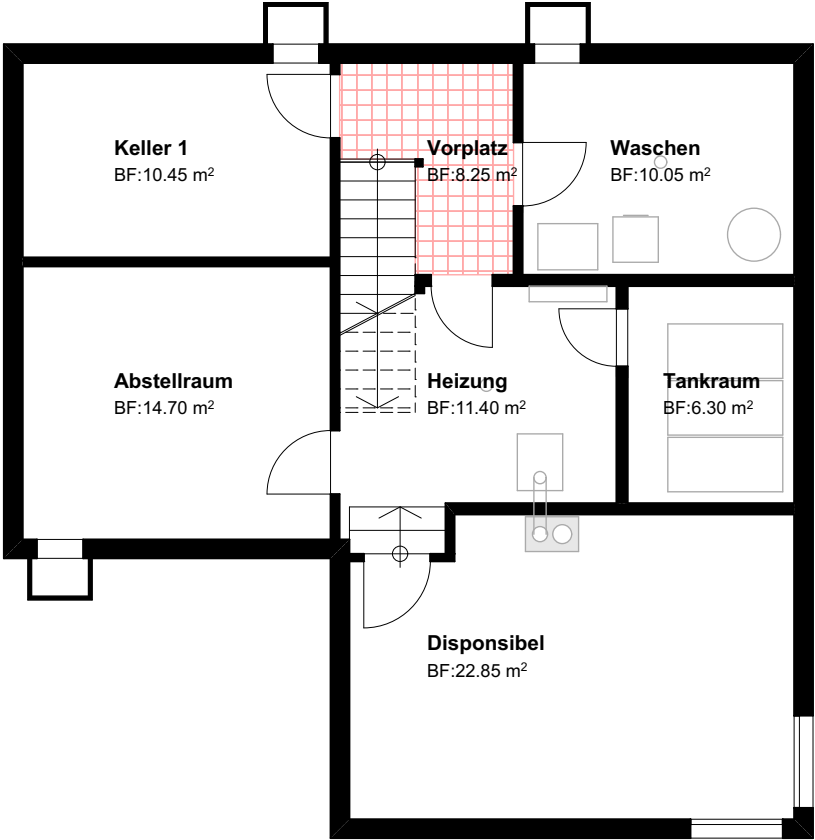


Umbau Einfamilienhaus
Hueb 40, Auenstein

Legende:

	Bestehend
	Abbruch
	Neu



Untergeschoss Mst.: 1:100

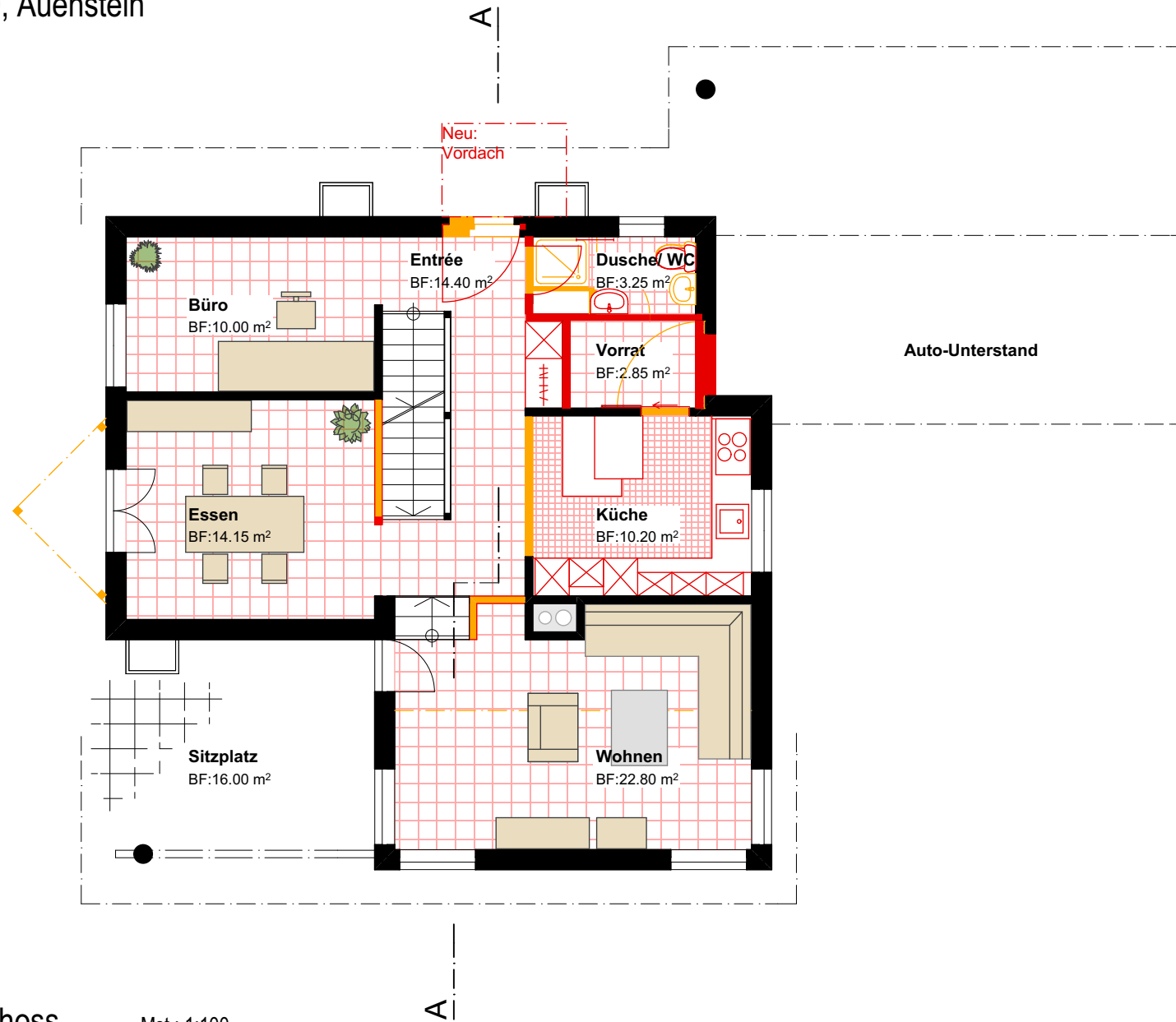
Nettowohnfläche: 8.25 m²



Umbau Einfamilienhaus
Hueb 40, Auenstein

Legende:

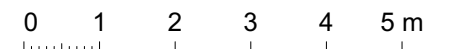
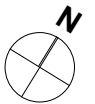
- Bestehend
- Abbruch
- Neu



Erdgeschoss

Mst.: 1:100

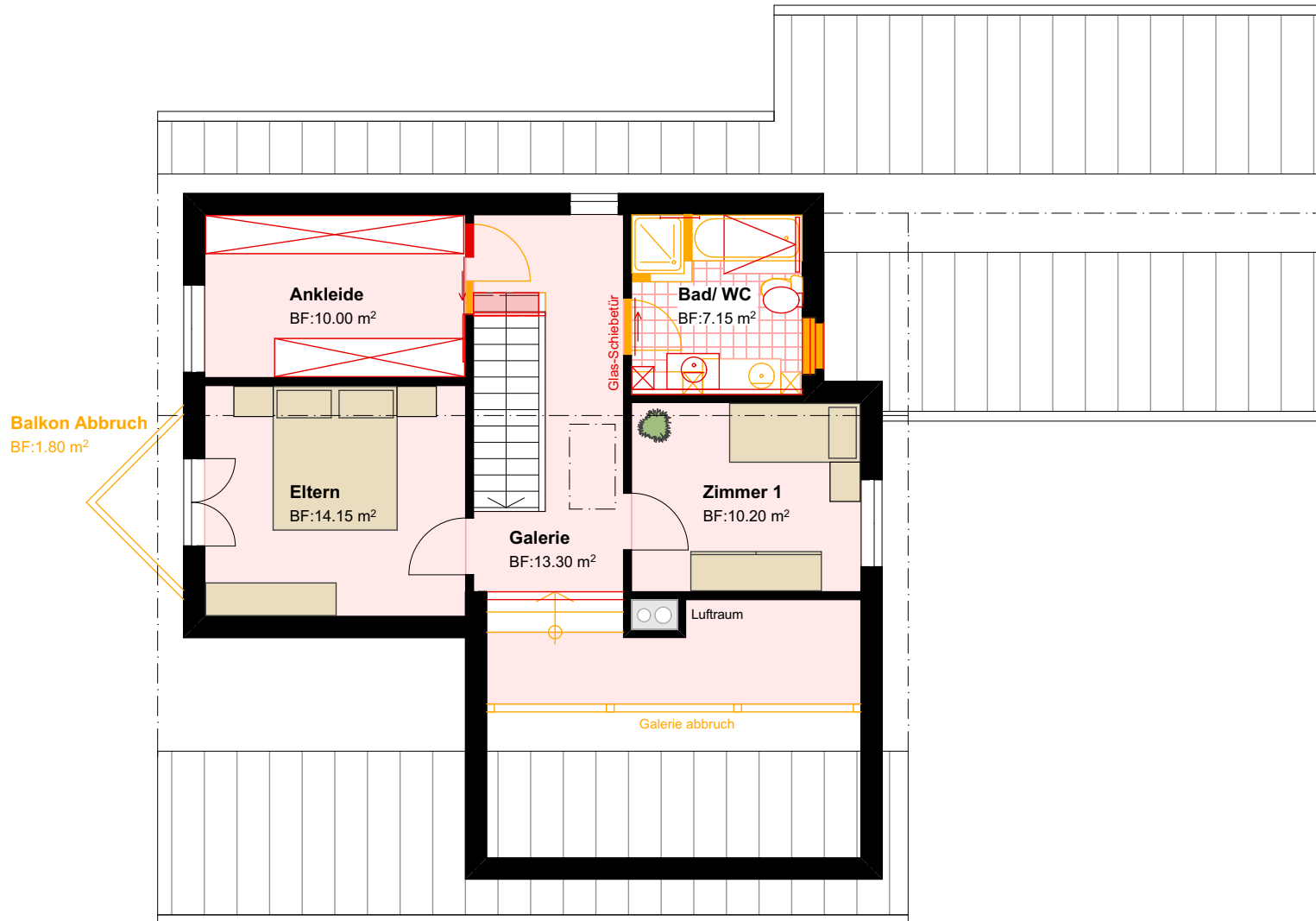
Nettowoohnfläche: 77.65 m²



Umbau Einfamilienhaus
Hueb 40, Auenstein

Legende:

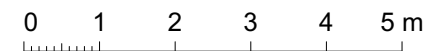
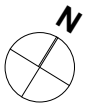
- Bestehend
- Abbruch
- Neu



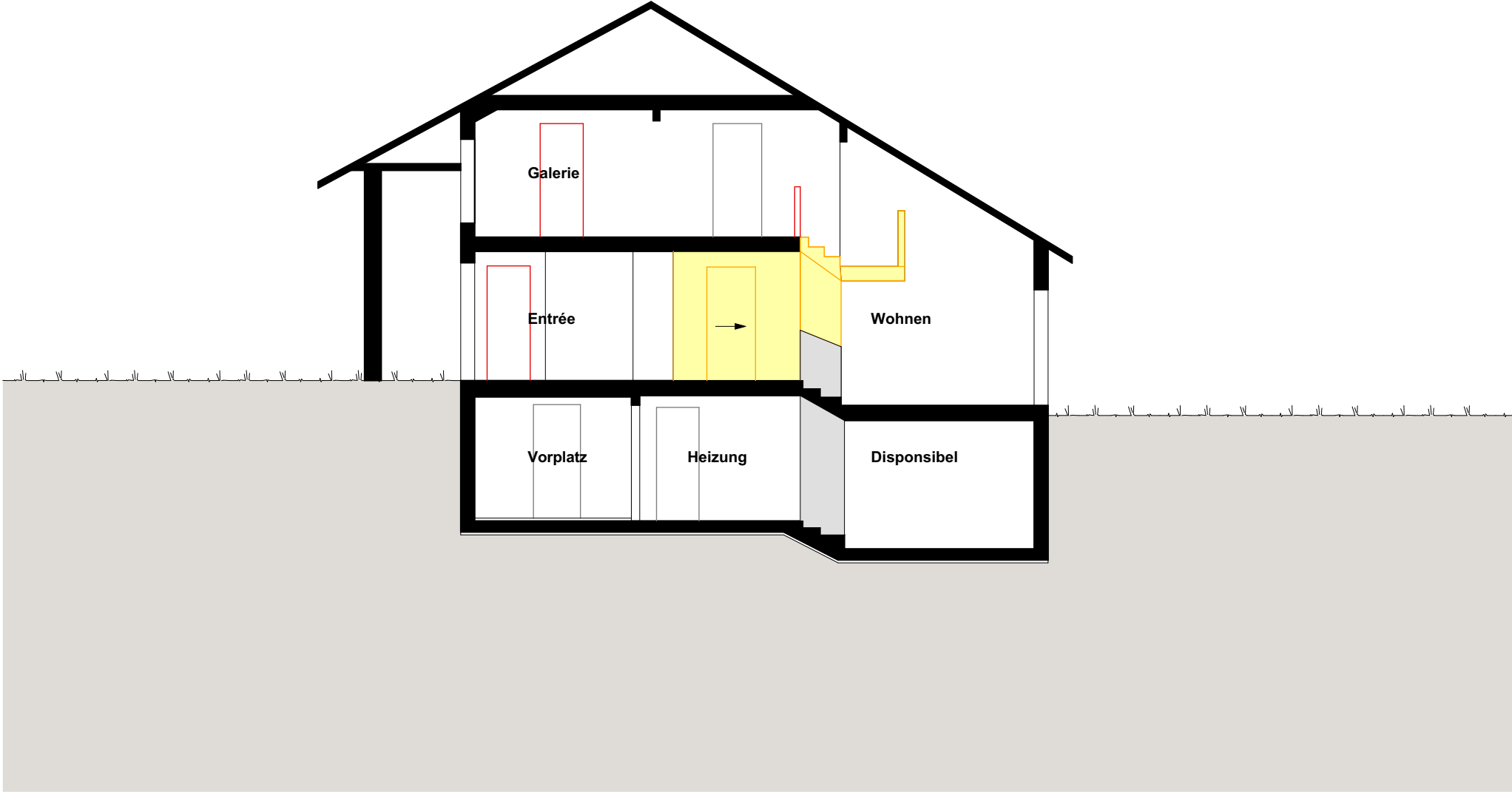
Obergeschoss

Mst.: 1:100

Nettowoohnfläche: 54.80 m²



Umbau Einfamilienhaus
Hueb 40, Auenstein



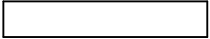
Schnitt A

Mst.: 1:100



Umbau Einfamilienhaus
Hueb 40, Auenstein

Legende:



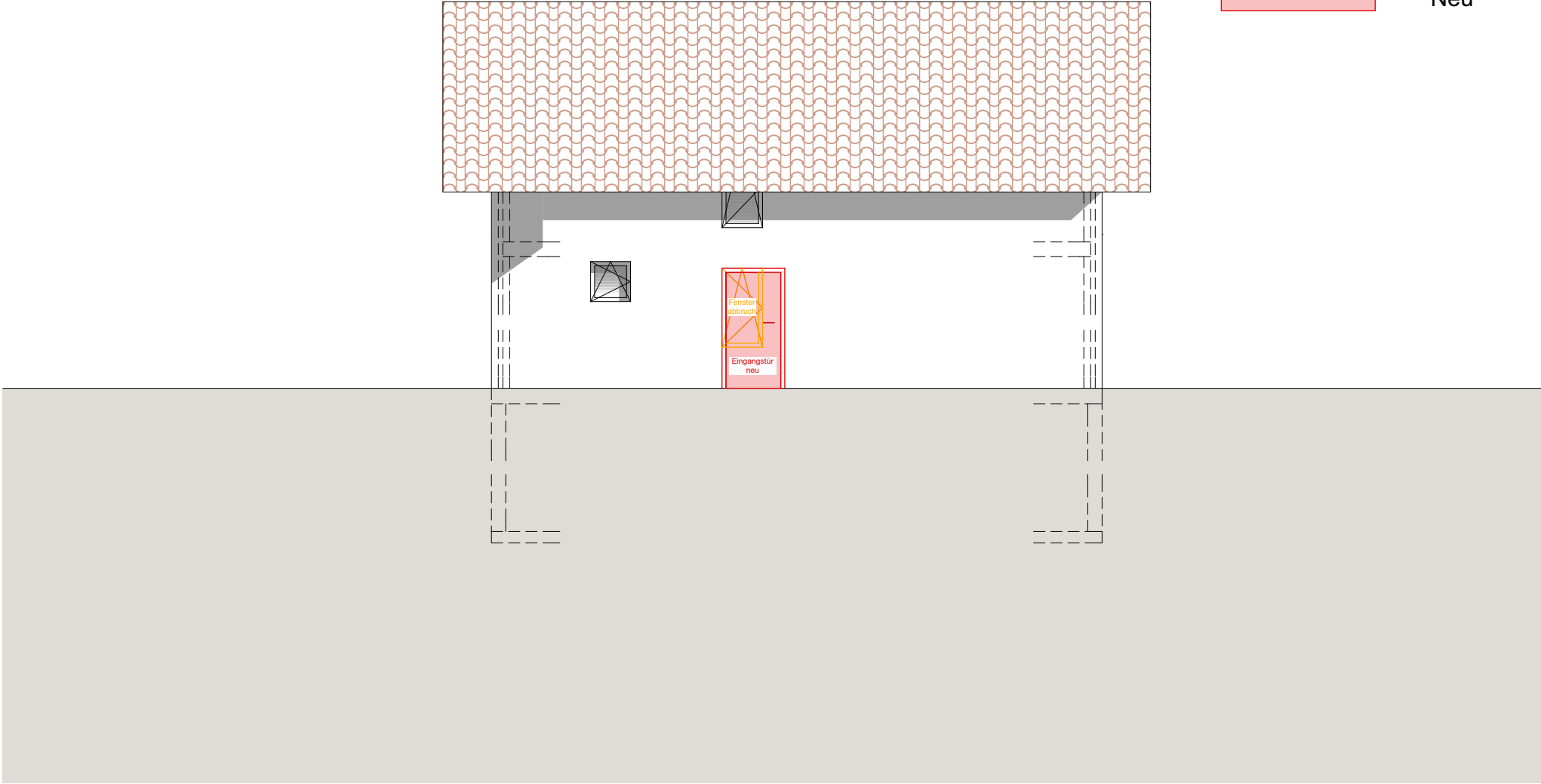
Bestehend



Abbruch



Neu



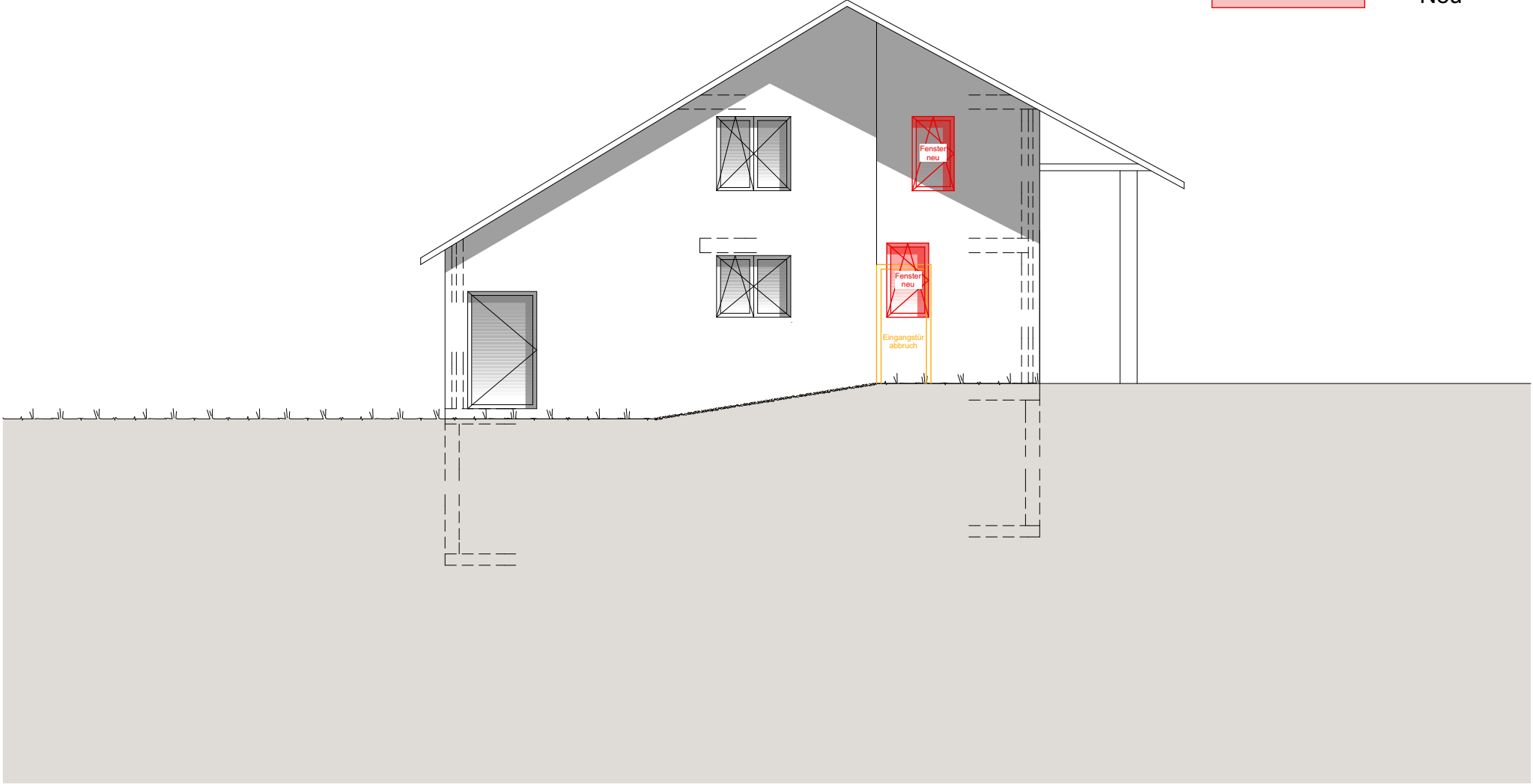
Nord-Ansicht

Mst.: 1:100



Umbau Einfamilienhaus
Hueb 40, Auenstein

- Legende:
- Bestehend
 - Abbruch
 - Neu



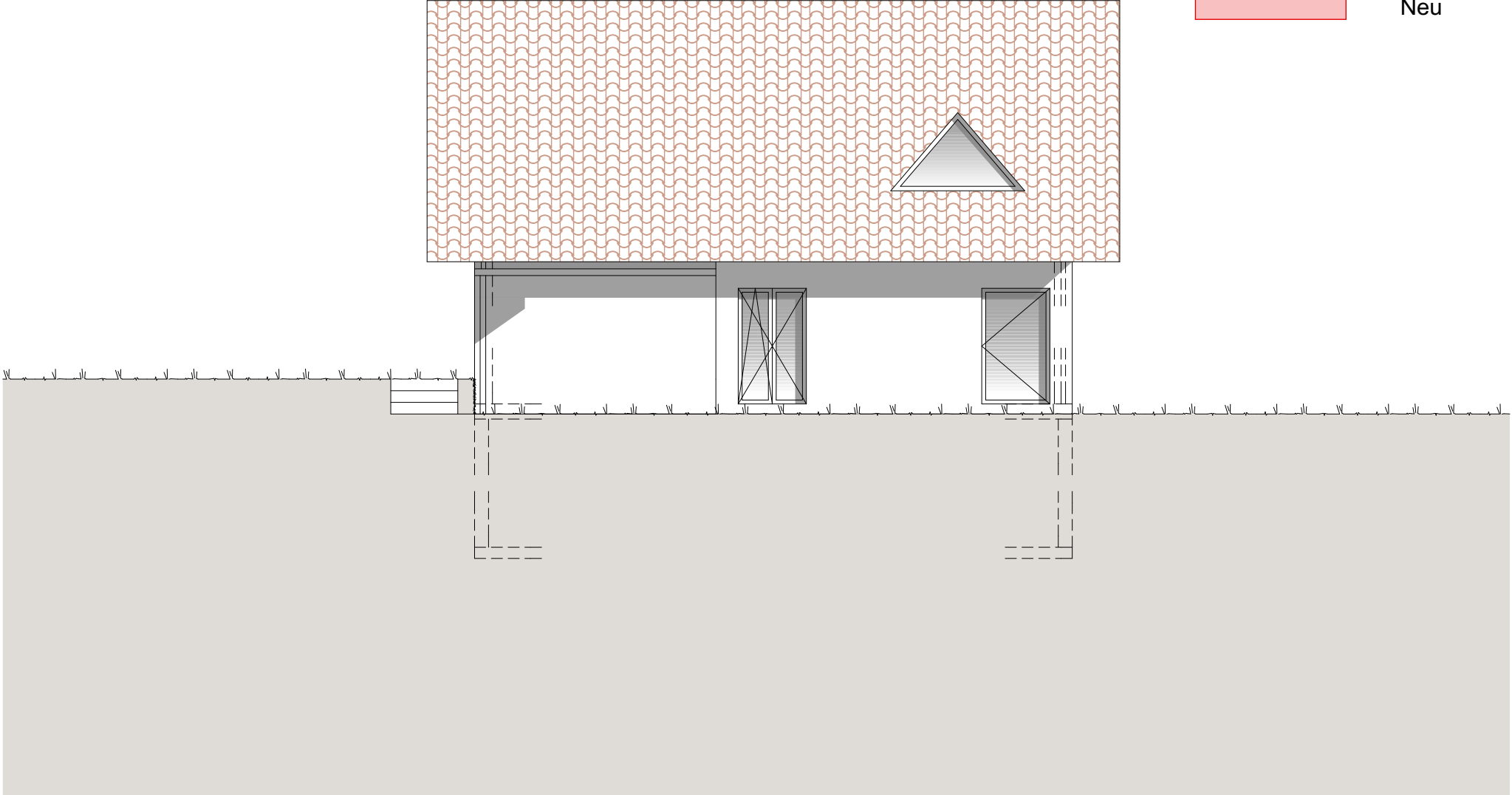
Ost-Ansicht

Mst.: 1:100



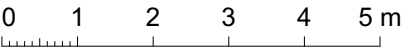
Umbau Einfamilienhaus
Hueb 40, Auenstein

- Legende:
- Bestehend
 - Abbruch
 - Neu



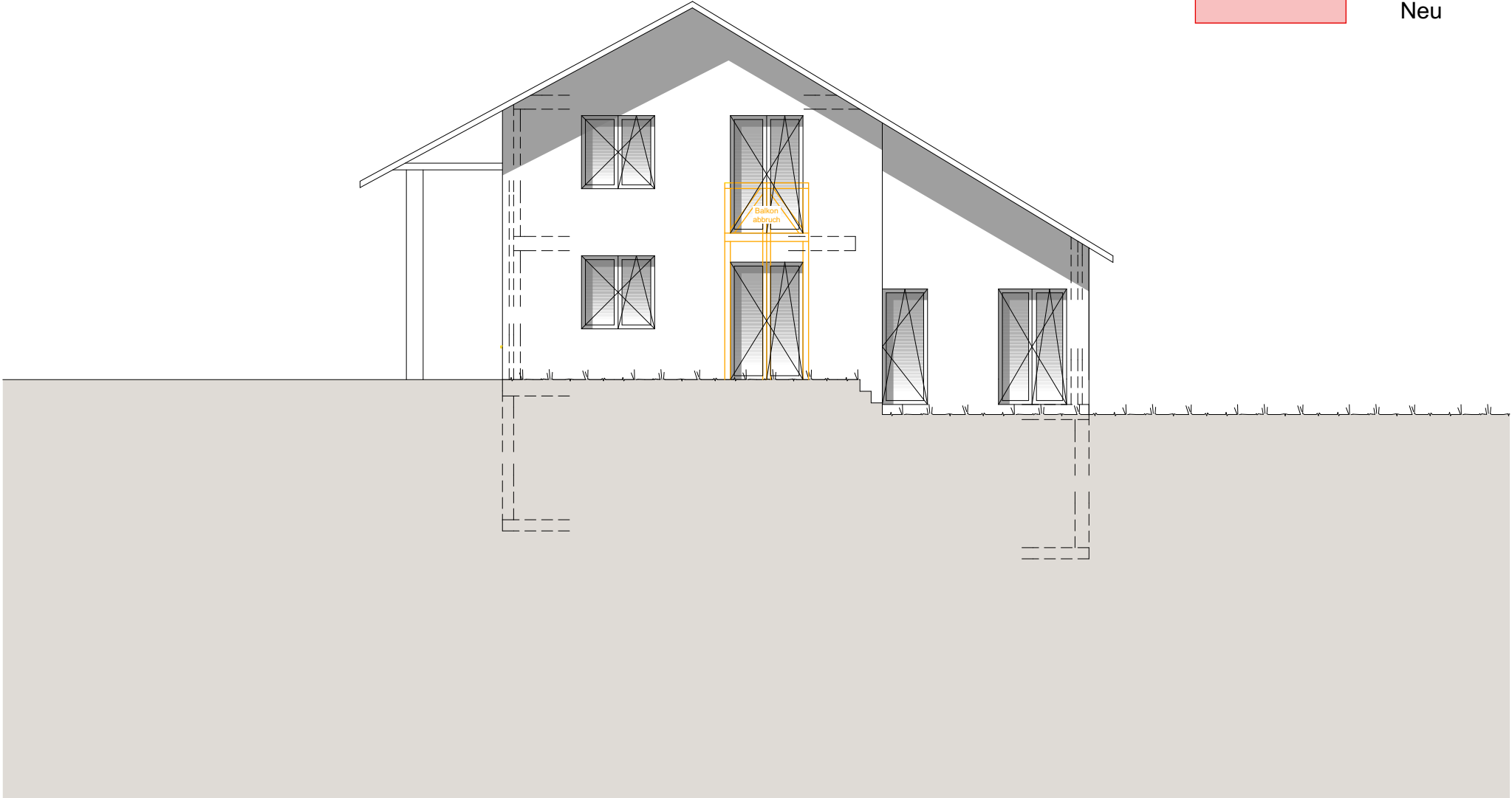
Süd-Ansicht

Mst.: 1:100



Umbau Einfamilienhaus
Hueb 40, Auenstein

- Legende:
- Bestehend
 - Abbruch
 - Neu



West-Ansicht

Mst.: 1:100

