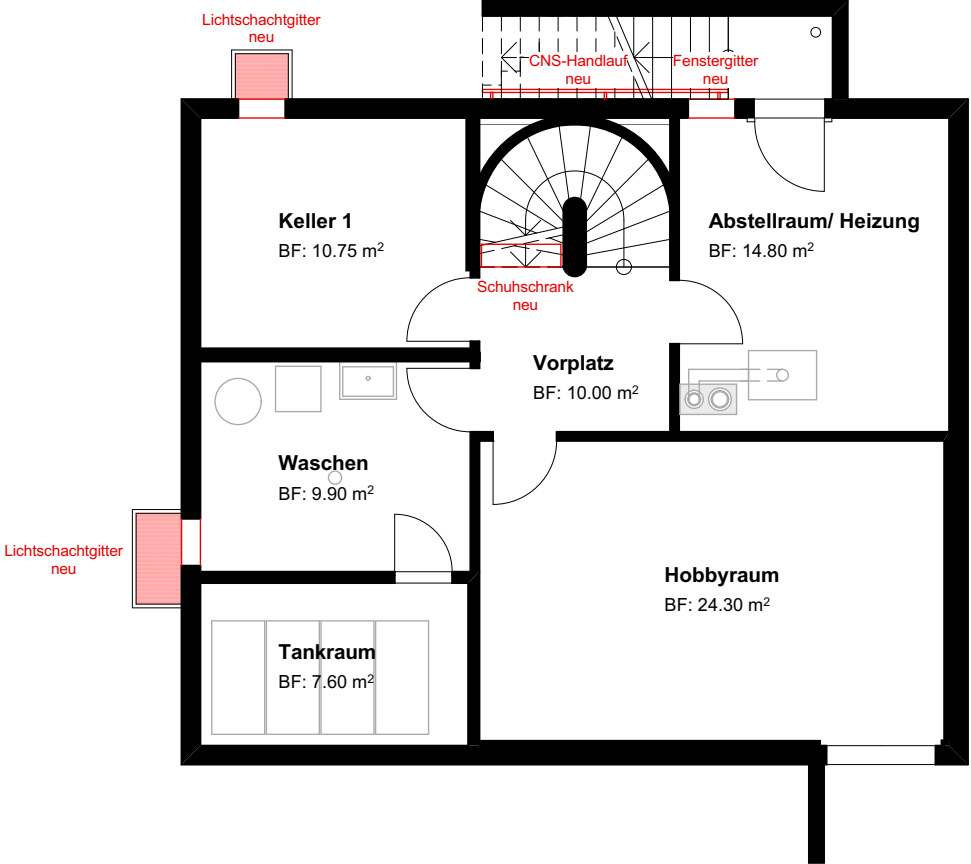


Umbau Einfamilienhaus Hueb 44, Auenstein

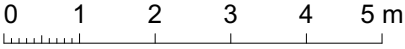
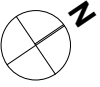
Legende:

- Bestehend
- Abbruch
- Neu



Untergeschoss Mst.: 1:100

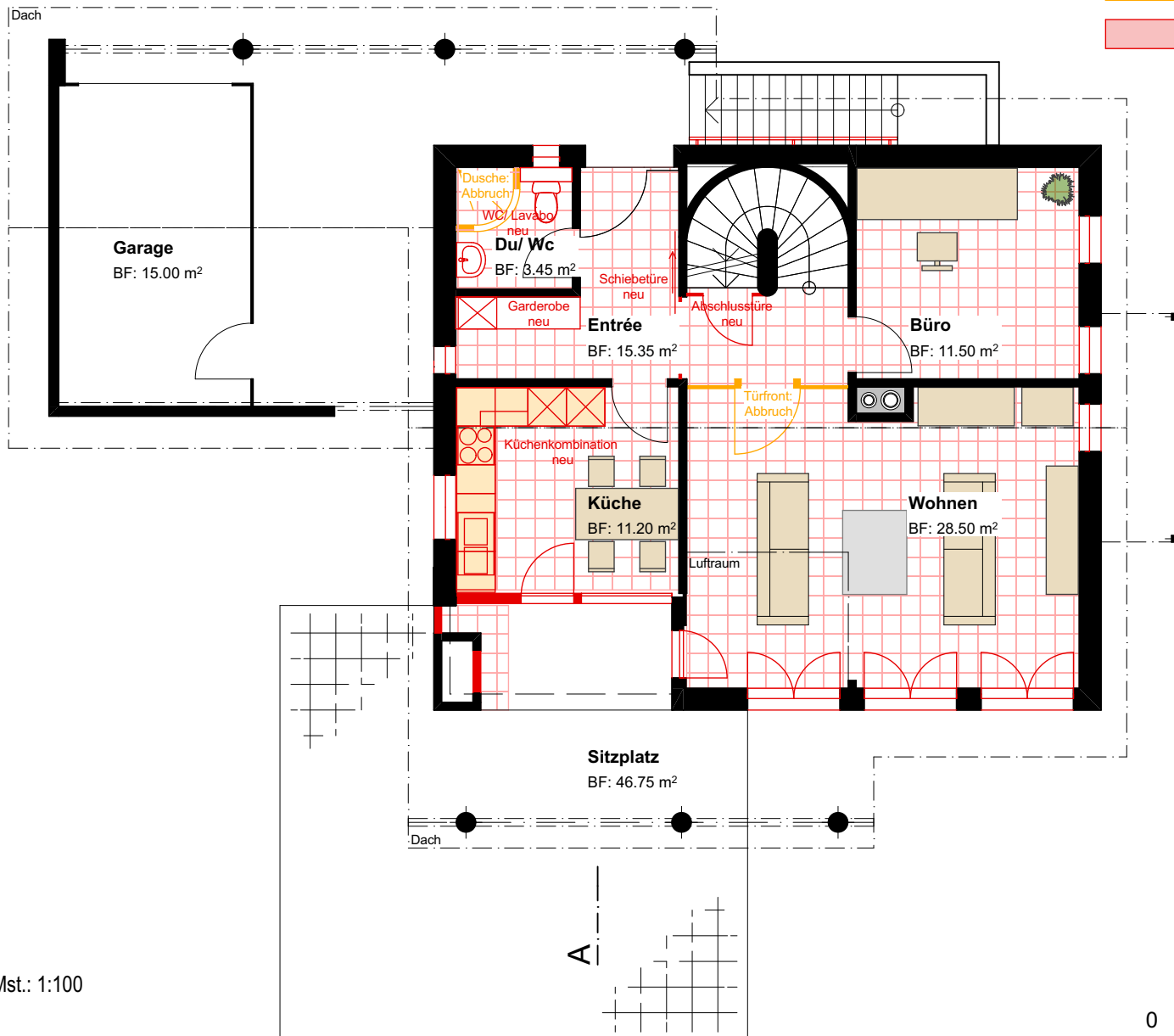
Nettowoohnfläche: 34.30 m²



Umbau Einfamilienhaus Hueb 44, Auenstein

Legende:

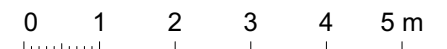
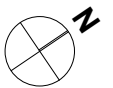
- Bestehend
- Abbruch
- Neu



Erdgeschoss

Mst.: 1:100

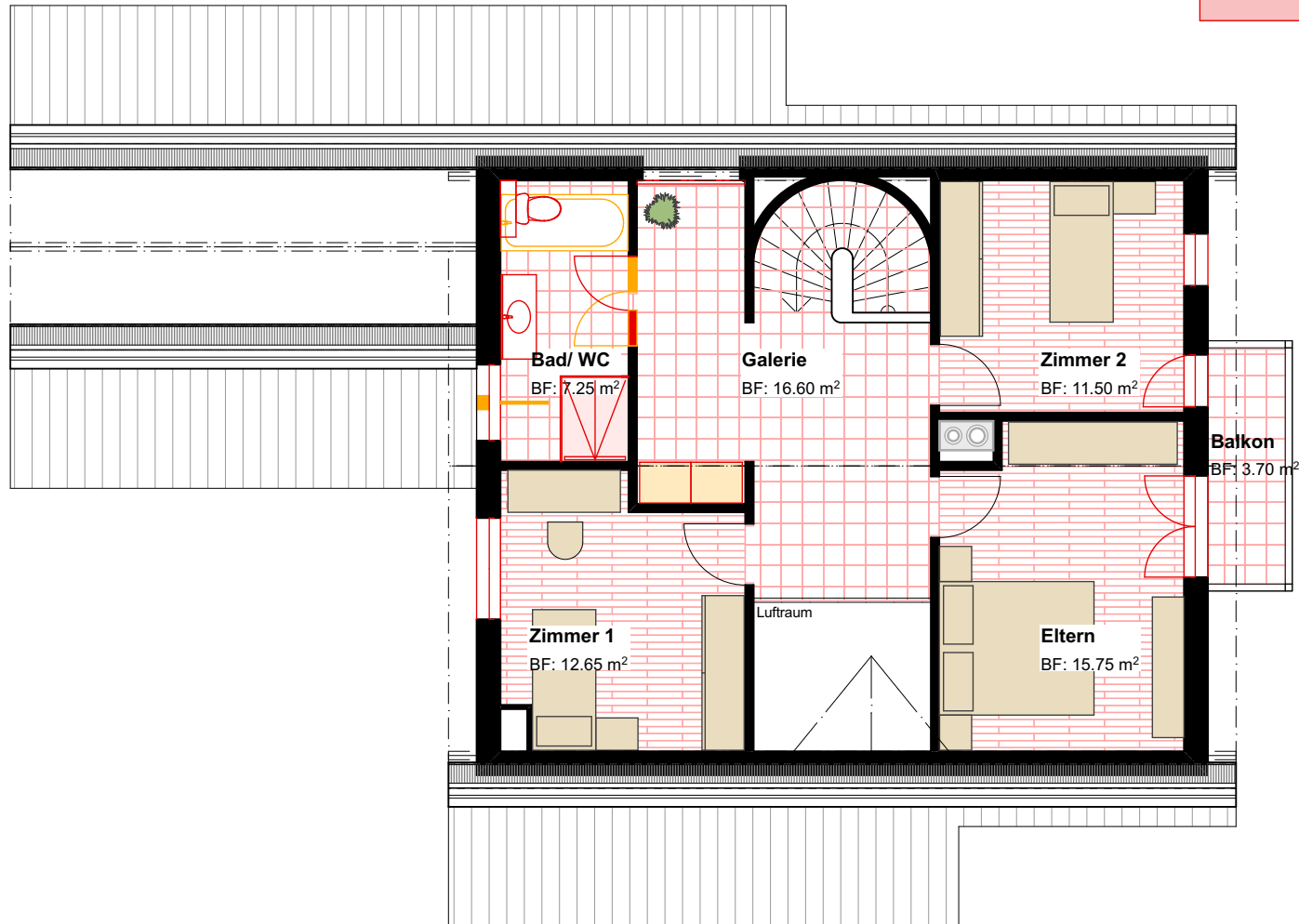
Nettowohnfläche: 70.00 m²



Umbau Einfamilienhaus
Hueb 44, Auenstein

Legende:

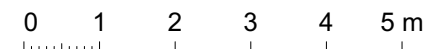
- Bestehend
- Abbruch
- Neu



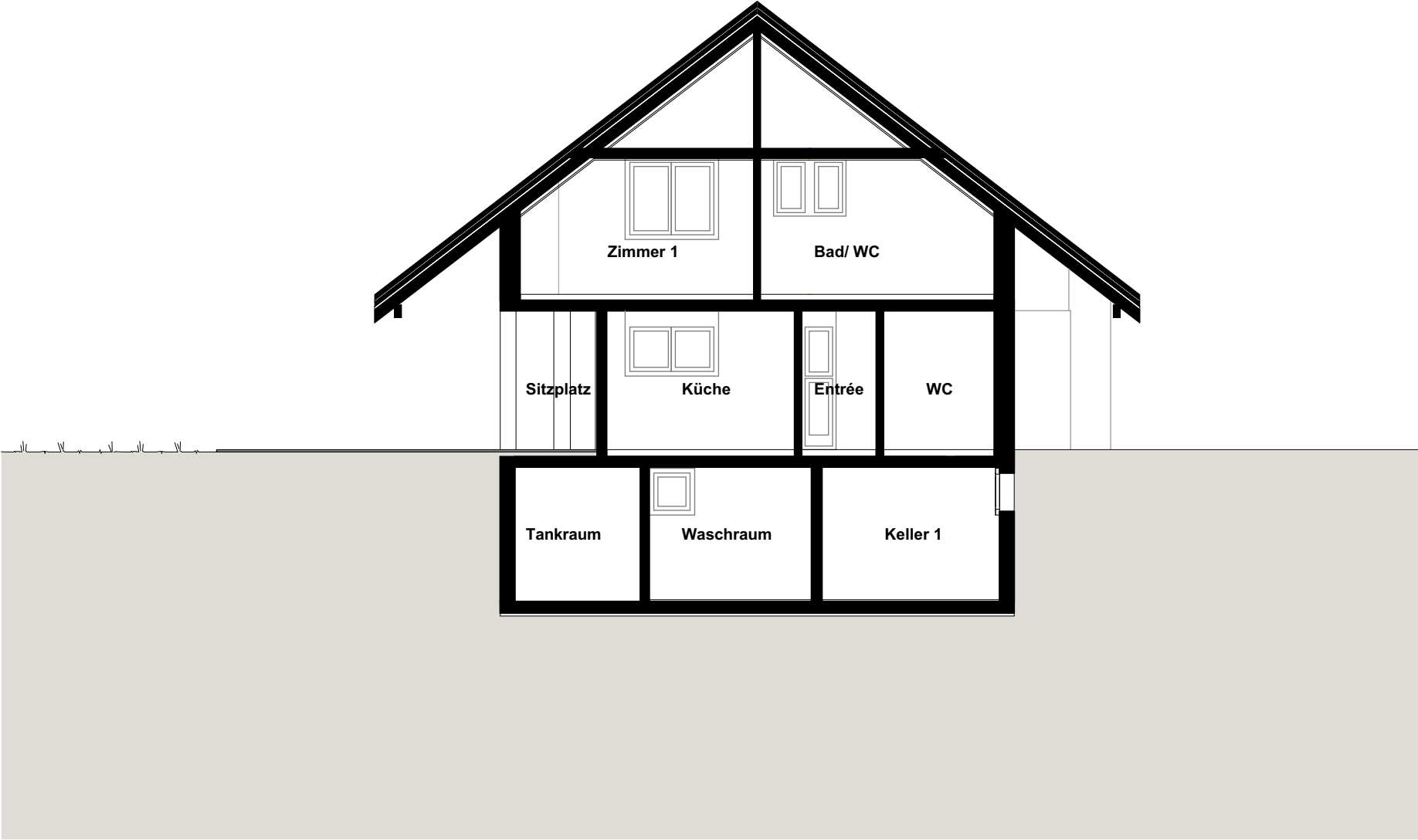
Obergeschoss

Mst.: 1:100

Nettowohnfläche: 63.75 m²



Umbau Einfamilienhaus
Hueb 44, Auenstein



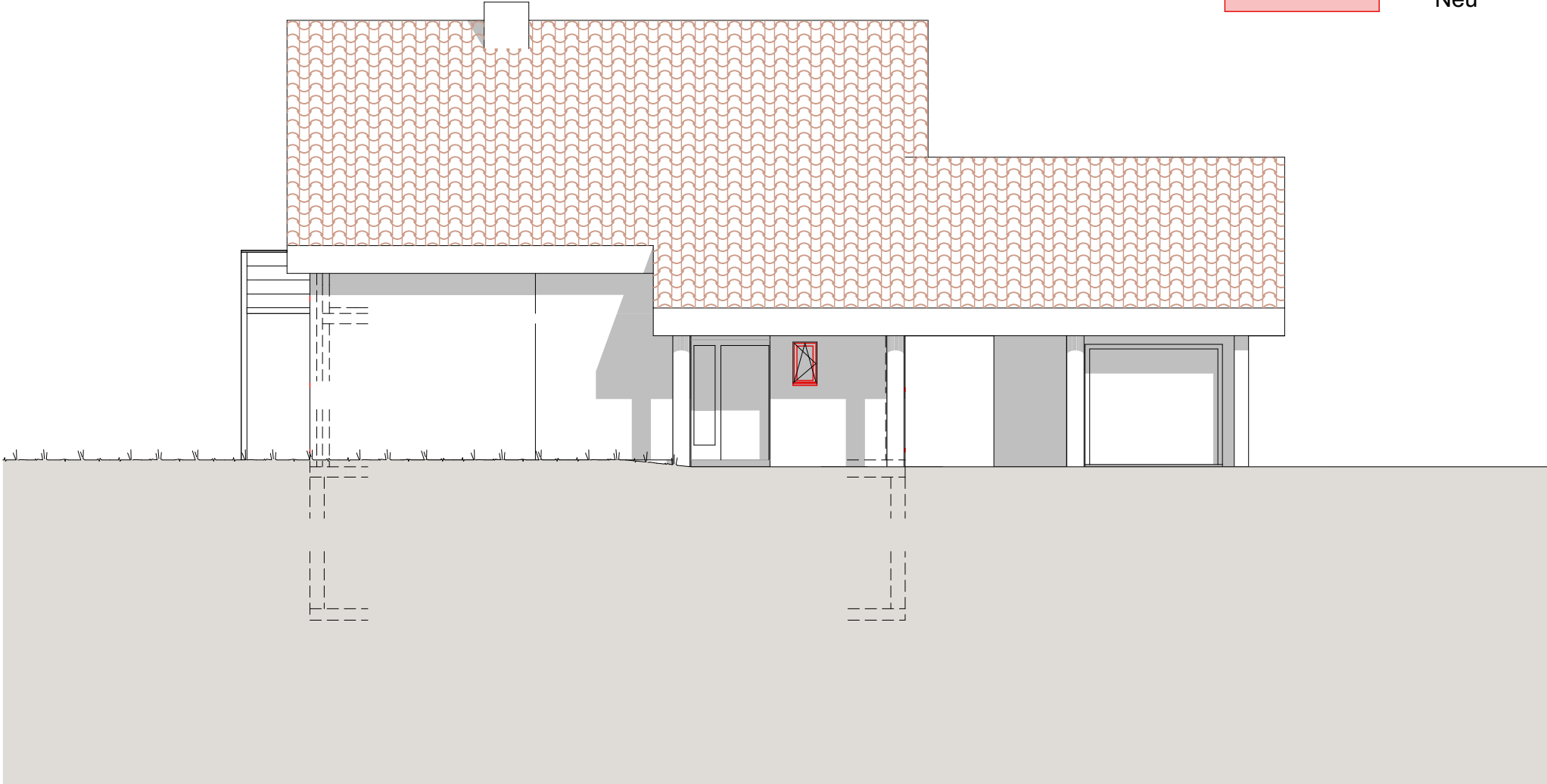
Schnitt A

Mst.: 1:100



Umbau Einfamilienhaus
Hueb 44, Auenstein

- Legende:
- Bestehend
 - Abbruch
 - Neu



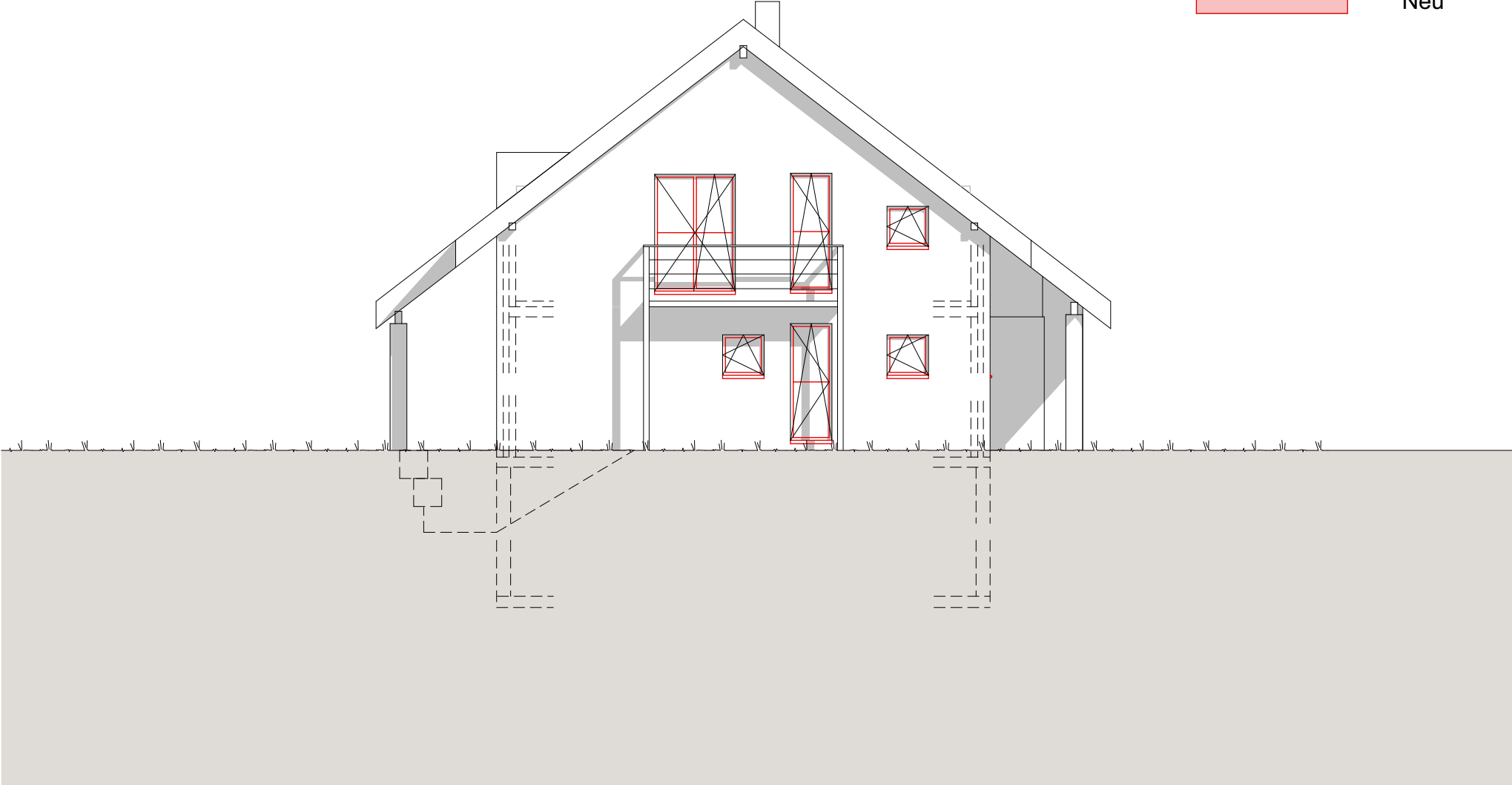
Nord-Ansicht

Mst.: 1:100



Umbau Einfamilienhaus
Hueb 44, Auenstein

- Legende:
- Bestehend
 - Abbruch
 - Neu



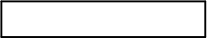
Ost-Ansicht

Mst.: 1:100



Umbau Einfamilienhaus
Hueb 44, Auenstein

Legende:



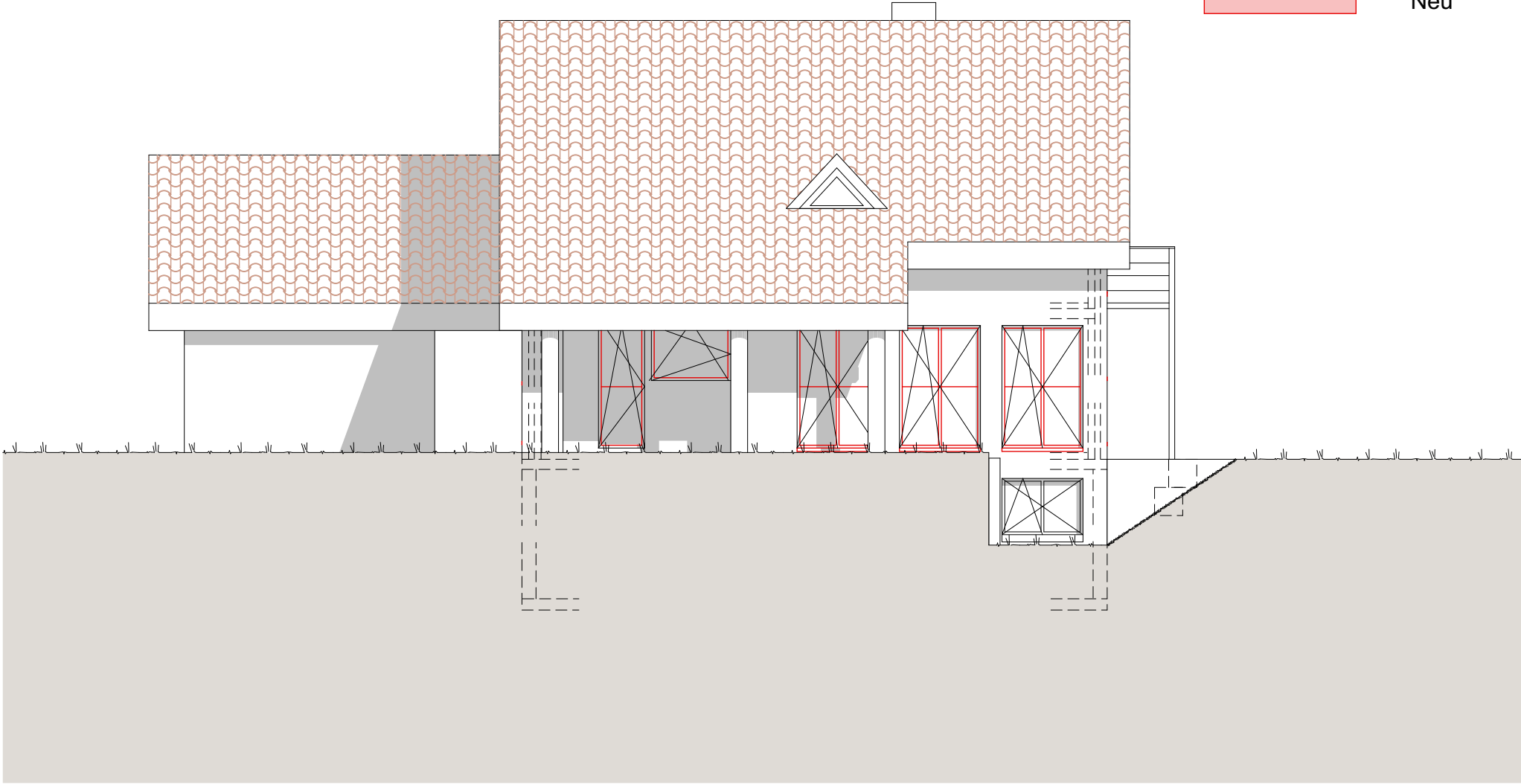
Bestehend



Abbruch



Neu



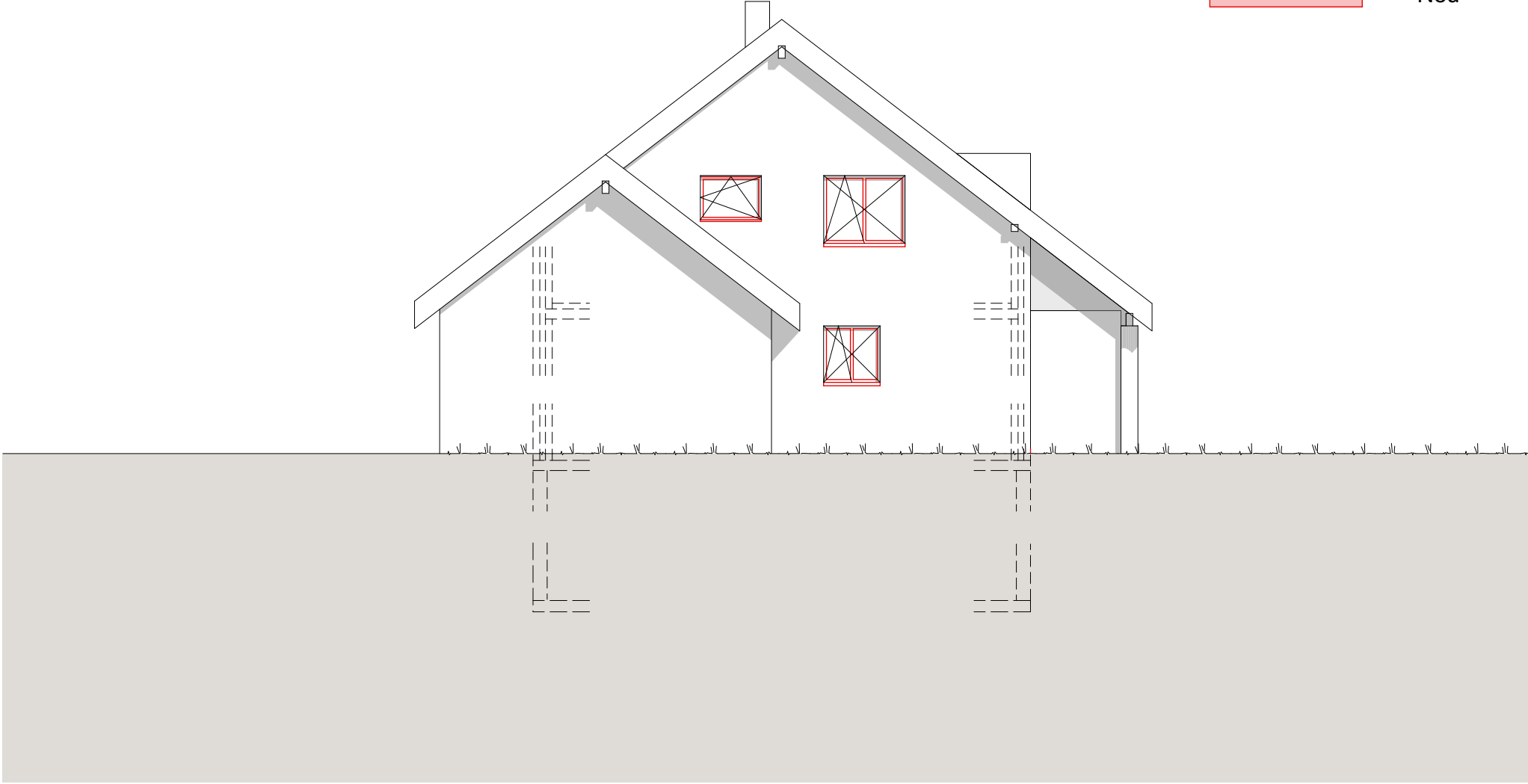
Süd-Ansicht

Mst.: 1:100



Umbau Einfamilienhaus
Hueb 44, Auenstein

- Legende:
- Bestehend
 - Abbruch
 - Neu



West-Ansicht

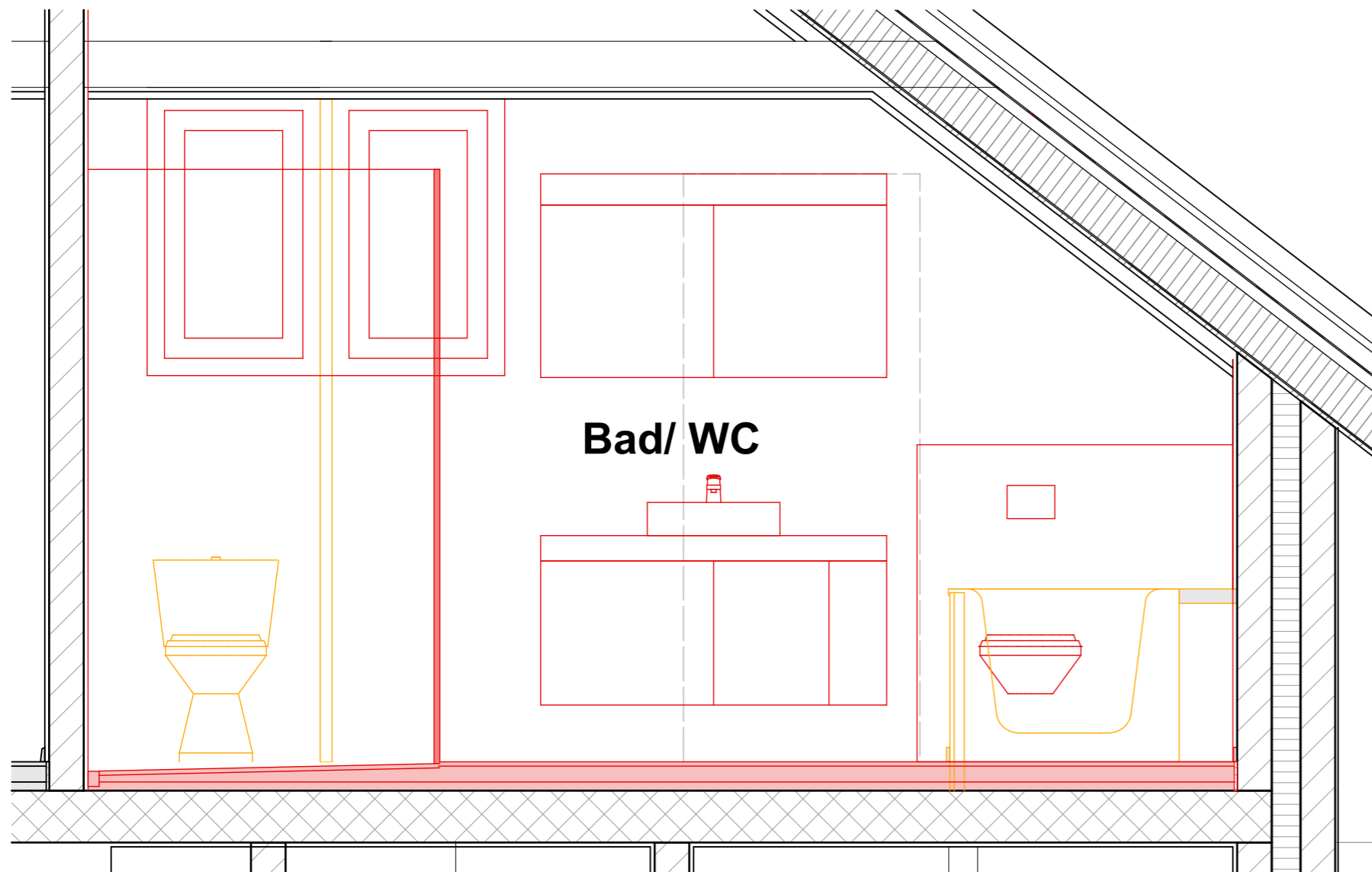
Mst.: 1:100



Umbau Einfamilienhaus
Hueb 44, Auenstein

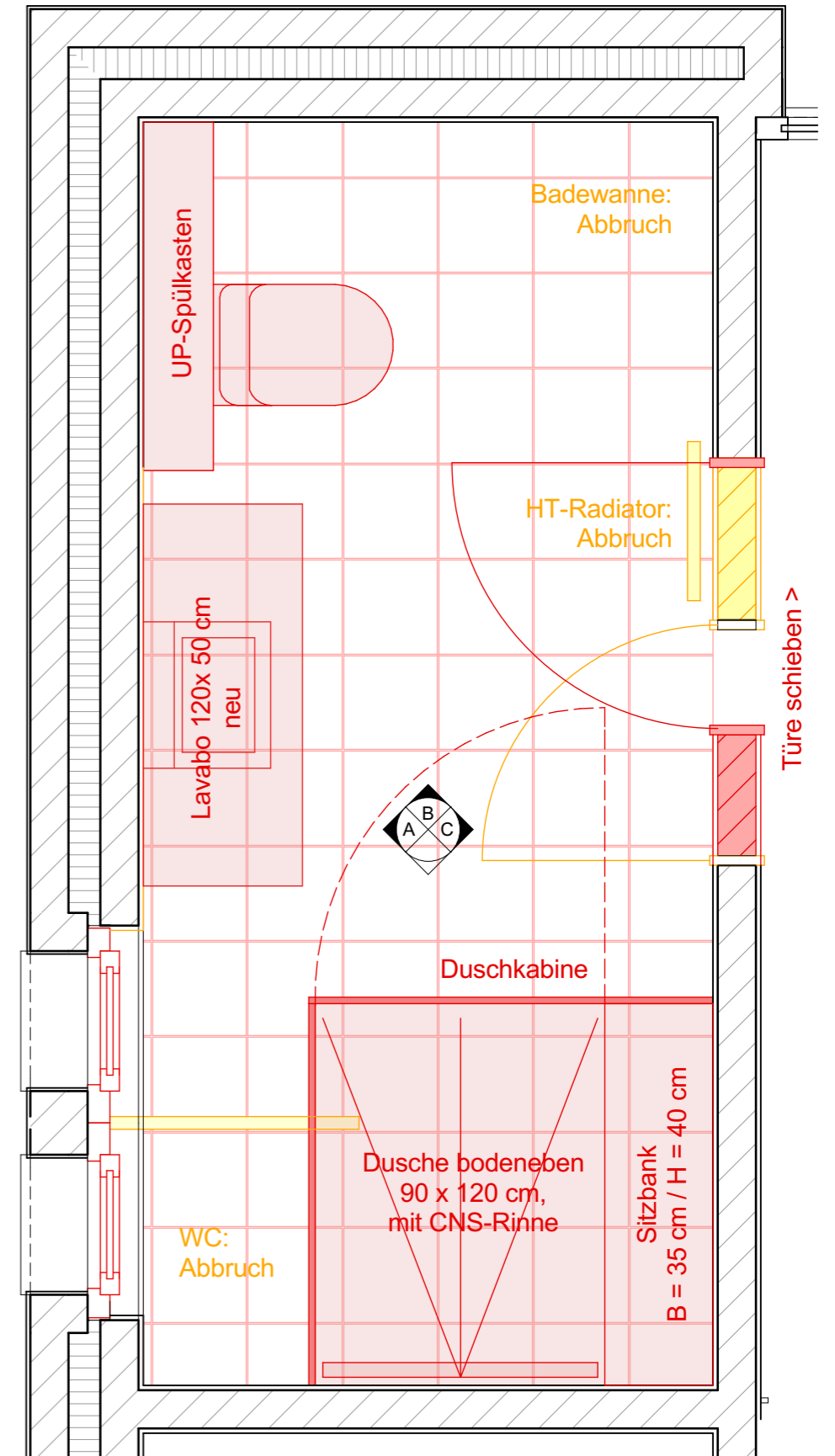
Legende:

- Bestehend
- Abbruch
- Neu



Schnitt

Nasszelle OG



Grundriss

0 1 2 3 m