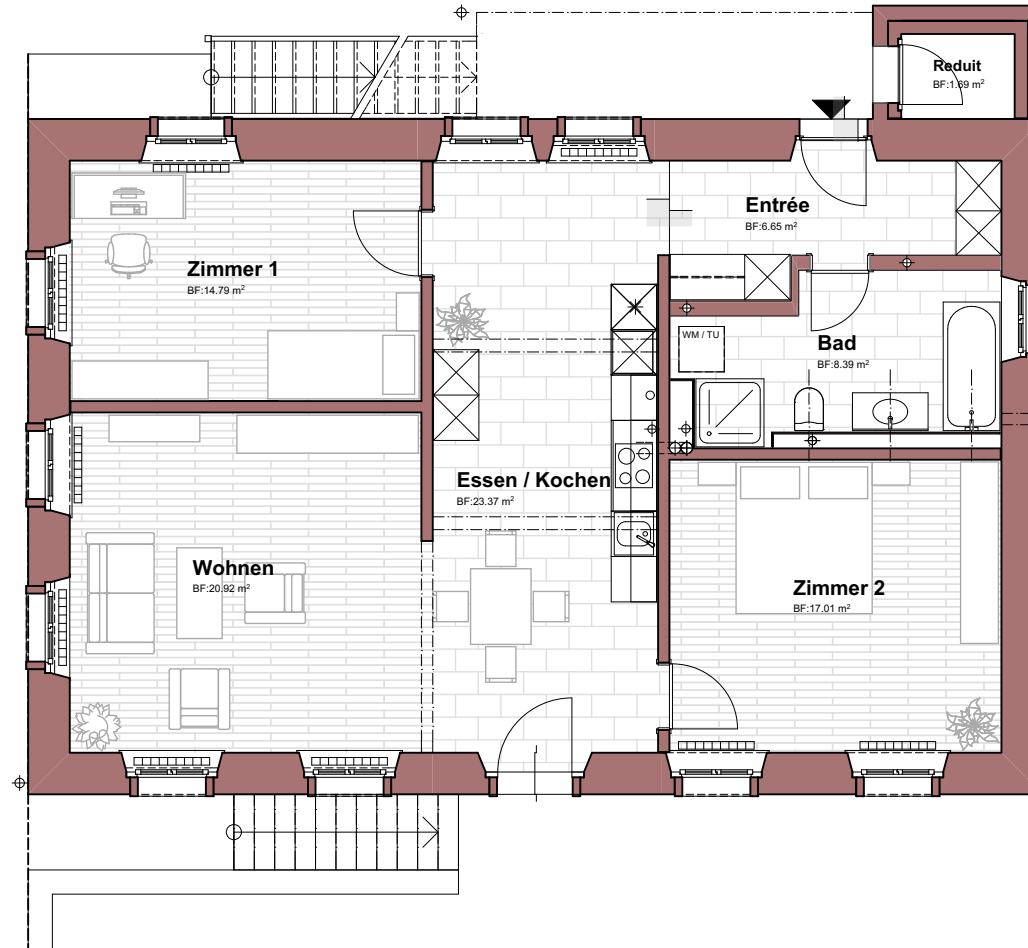


Grundriss Erdgeschoss 1:100

3 1/2 - Zimmer - Wohnung

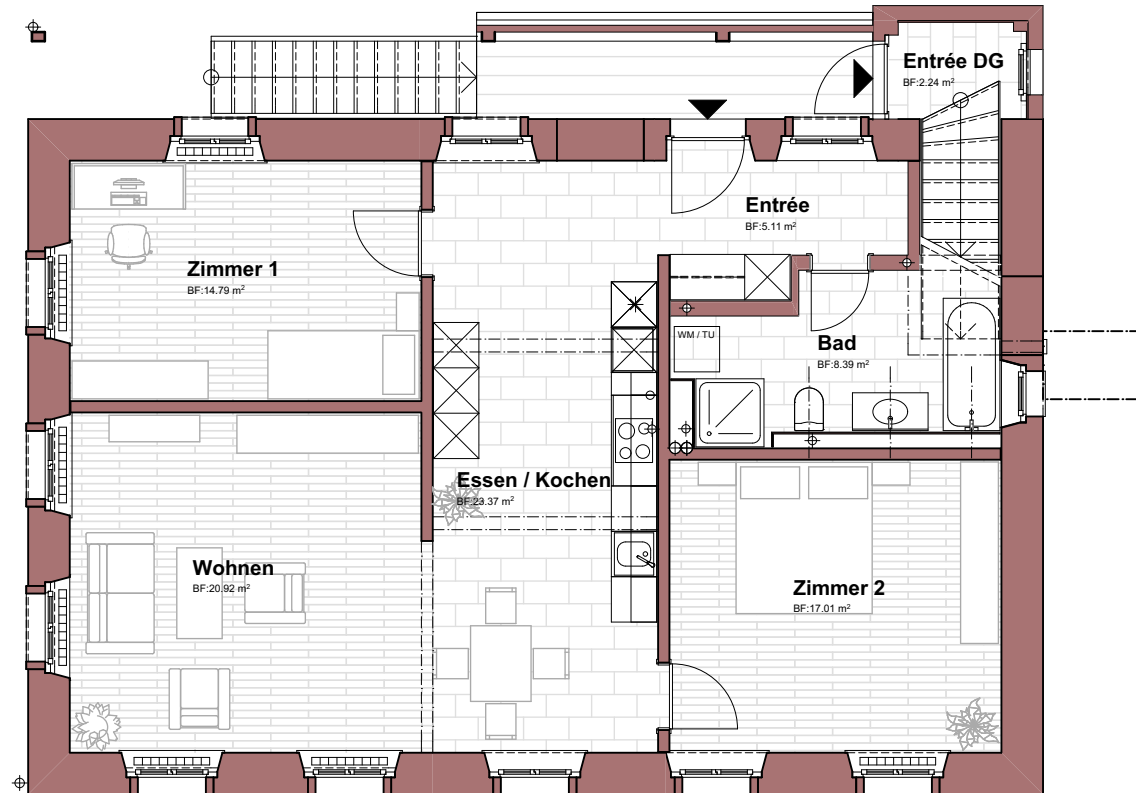
Netto-Wohnfläche NWF: ca. 91.0 m²



Grundriss Obergeschoss 1:100

3 1/2 - Zimmer - Wohnung

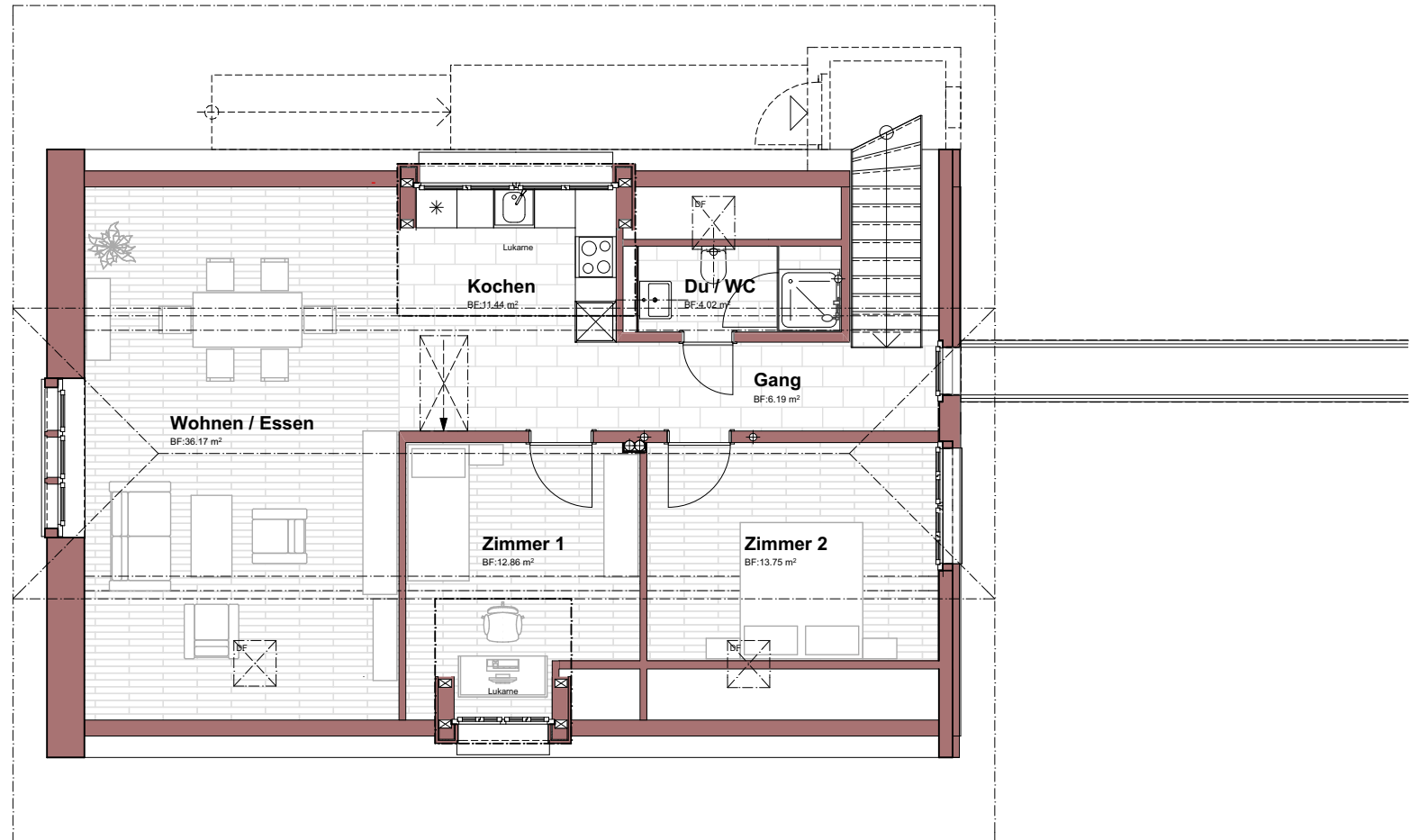
Netto-Wohnfläche NWF: ca. 89.5 m²



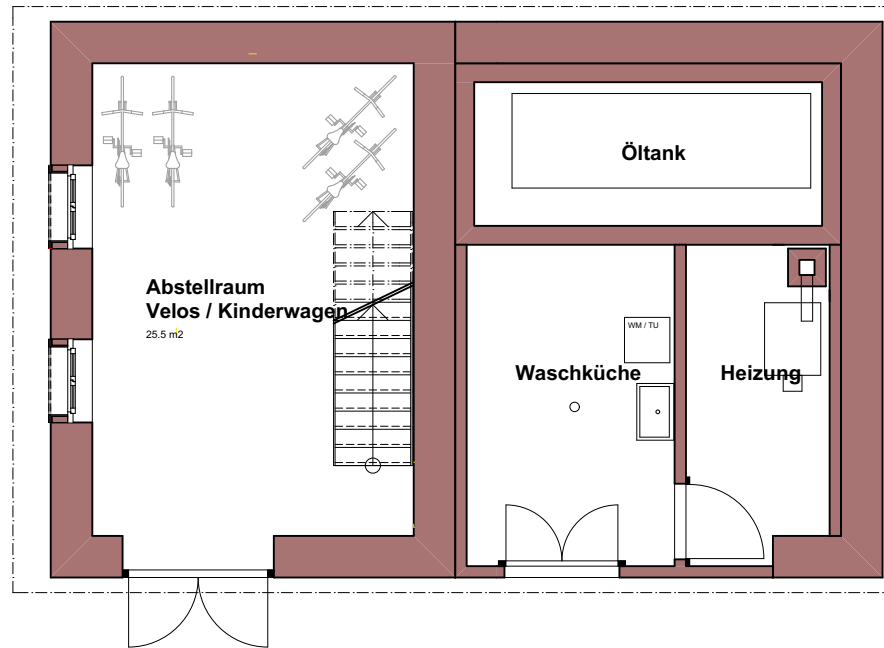
Grundriss Dachgeschoss

3 1/2 - Zimmer - Dachwohnung

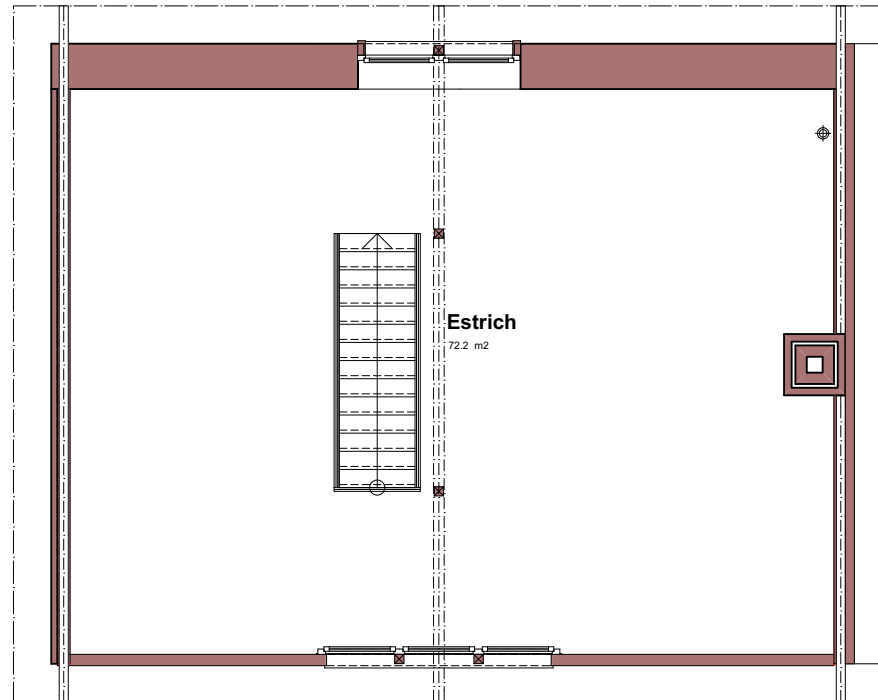
Netto-Wohnfläche NWF: ca. 84.4 m²



Grundriss Schopf Erdgeschoss 1:100



Grundriss Schopf Obergeschoss 1:100



Büro für Architektur & Bauleitungen GmbH

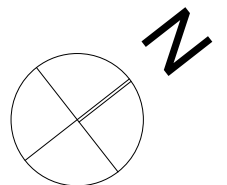
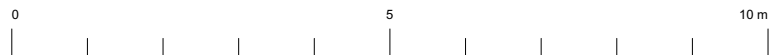
Dorfstrasse 17, 5102 Rapperswil

info@bab-arch.ch

www.bab-arch.ch

Fon: 062 889 17 70

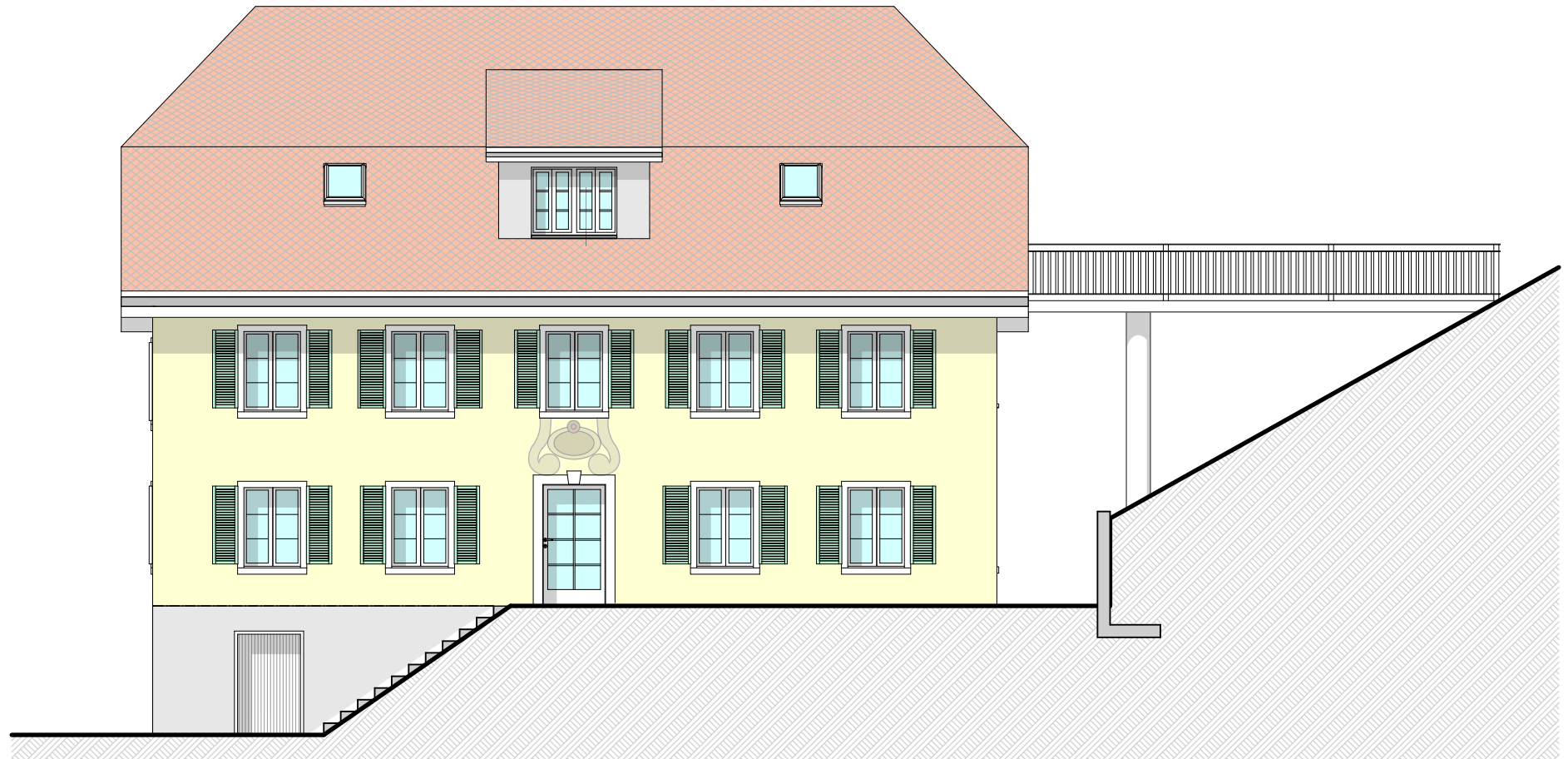
Fax: 062 889 17 71



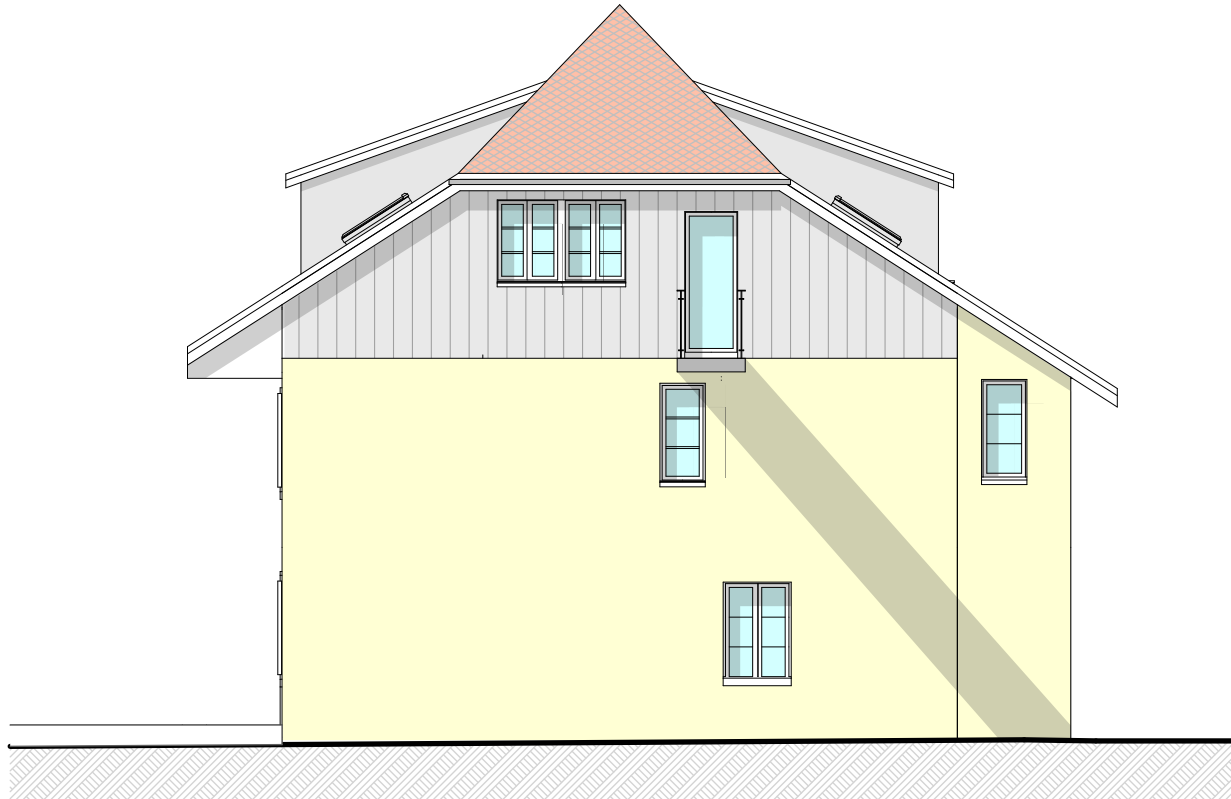
Ansicht Südwest



Ansicht Südost



Ansicht Nordost



Ansicht Nordwest

